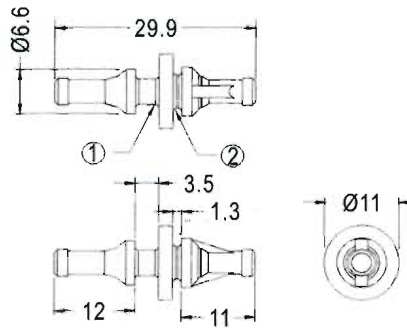
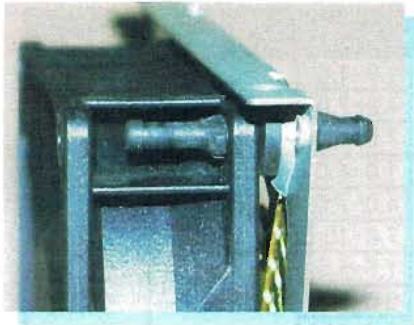


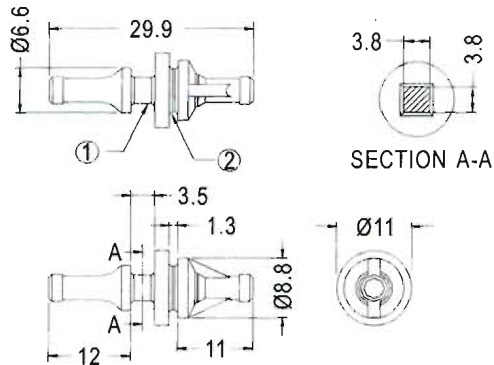
LÜFTER – SPREIZNIET

- ◆ MATERIAL:TPE
- ◆ COLOR:BLACK
- ◆ UNIT:mm



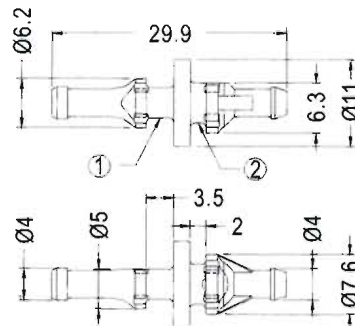
PART NO	PACKAGE
BUB-30	1000

- ① FAN MOUNTING HOLE $\text{Ø}4.3^{+0.2}_{-0.0}$ mm AND 3 TO 5.5mm THICKNESS.
- ② SUPPORT MOUNTING HOLE $\text{Ø}5\pm 0.1$ mm AND 1 TO 2mm THICKNESS.



PART NO	PACKAGE
BUB-30L	1000

- ① FANS MOUNTING HOLE $\text{Ø}4.6\pm 0.2$ mm AND 3 TO 5.5mm THICKNESS.
- ② SUPPORT MOUNTING HOLE $\text{Ø}6.5\pm 0.1$ mm AND 1 TO 2mm THICKNESS.

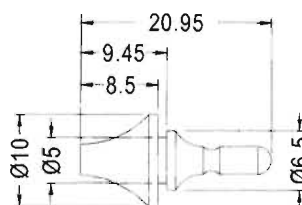


PART NO	PACKAGE
BUB-29	1000

- ① FANS MOUNTING HOLE $\text{Ø}4.3\sim\text{Ø}4.5$ mm
CHASSIS THICKNESS 3.5~4mm
- ② SUPPORT MOUNTING HOLE $\text{Ø}4.5\sim\text{Ø}4.8$ mm
CHASSIS THICKNESS 0.8~2mm

LÜFTER – SPREIZNIET

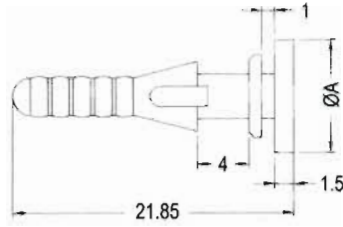
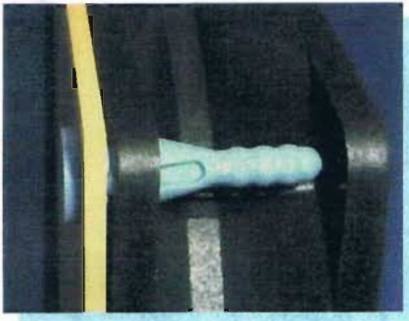
- ◆ MATERIAL:TPE
- ◆ COLOR:BLACK
- ◆ UNIT:mm



PART NO	PACKAGE
BUC-2	1000

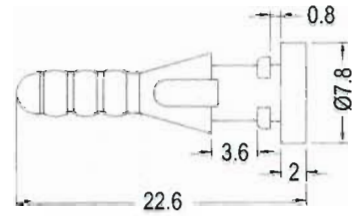
LÜFTER – SPREIZNIET

- ◆ MATERIAL:TPE
- ◆ COLOR:BLACK
- ◆ UNIT:mm



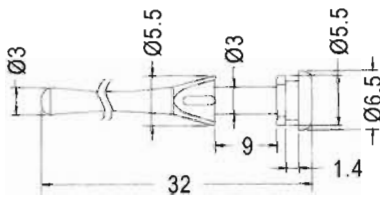
FAN MOUNTING HOLE Ø3.5
CHASSIS MOUNTING HOLE Ø3.5

PART NO	A	PACKAGE
BUB-88	8.8	1000
★ BUB-88S	7.8	



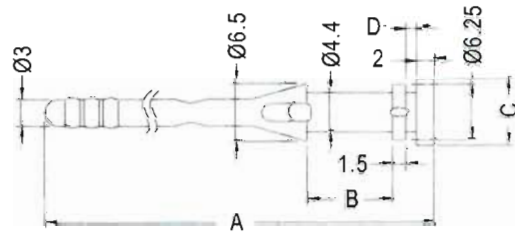
FAN MOUNTING HOLE Ø4.3
CHASSIS MOUNTING HOLE Ø4.4

PART NO	PACKAGE
BUB-1	1000



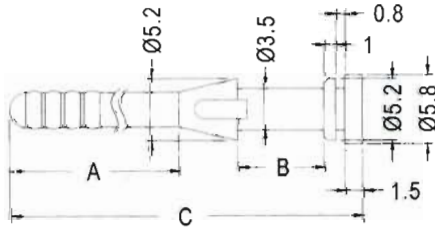
FANS MOUNTING HOLE Ø3.0
CHASSIS MOUNTING HOLE Ø4.2

PART NO	PACKAGE
BUB-32	1000



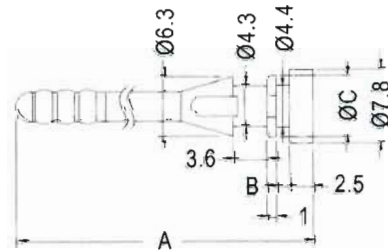
FANS MOUNTING HOLE Ø4.3
CHASSIS MOUNTING HOLE Ø4.3

PART NO	A	B	C	D	PACKAGE
BUB-35	35.0	3.0	7.5	1.2	1000



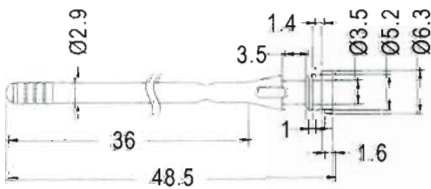
FANS MOUNTING HOLE Ø3.5
CHASSIS MOUNTING HOLE Ø3.5

PART NO	A	B	C	PACKAGE
BUB-20	7.7	4.0	20	1000
BUB-70	34.5	27.0	70	500



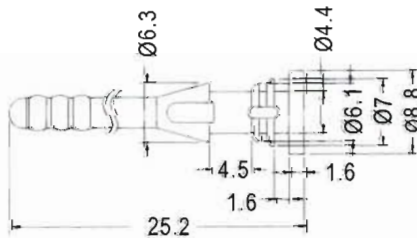
FANS MOUNTING HOLE Ø4.3
CHASSIS MOUNTING HOLE Ø4.3

PART NO	A	B	C	PACKAGE
BUB-22	23.1	0.8	5.6	1000
BUB-25	23.7	1.4	6.5	



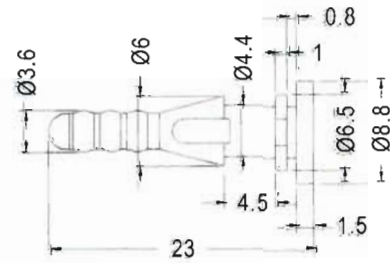
FANS MOUNTING HOLE Ø3.5
CHASSIS MOUNTING HOLE Ø3.5

PART NO	PACKAGE
BUB-49	500



FANS MOUNTING HOLE Ø4.3
CHASSIS MOUNTING HOLE Ø4.3

PART NO	PACKAGE
BUB-26	1000

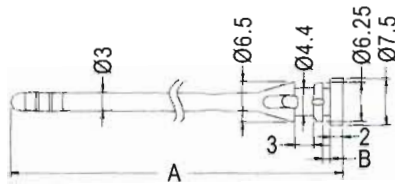
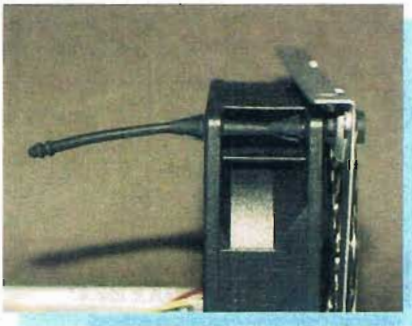


FANS MOUNTING HOLE Ø4.3
CHASSIS MOUNTING HOLE Ø4.4

PART NO	PACKAGE
BUB-23	1000

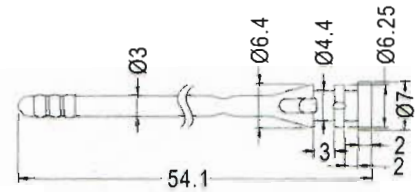
LÜFTER – SPREIZNIET

- ◆ MATERIAL:TPE
- ◆ COLOR:BLACK
- ◆ UNIT:mm



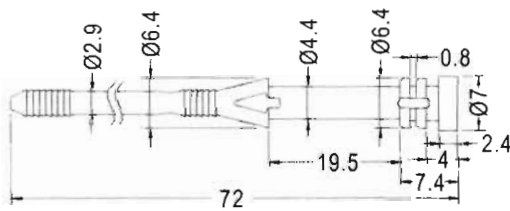
FANS MOUNTING HOLE $\varnothing 4.3$
CHASSIS MOUNTING HOLE $\varnothing 4.3$

PART NO	A	B	PACKAGE
BUB-53	53.3	1.2	500
BUB-74	70.0	0.8	



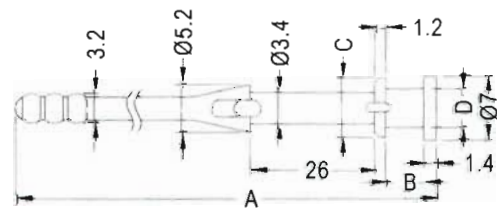
FANS MOUNTING HOLE $\varnothing 4.3$
CHASSIS MOUNTING HOLE $\varnothing 4.3$

PART NO	PACKAGE
BUB-54	500



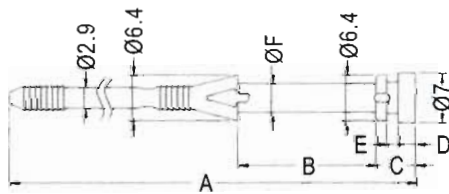
FANS MOUNTING HOLE $\varnothing 4.3$
CHASSIS MOUNTING HOLE $\varnothing 4.3$

PART NO	PACKAGE
BUB-72	500



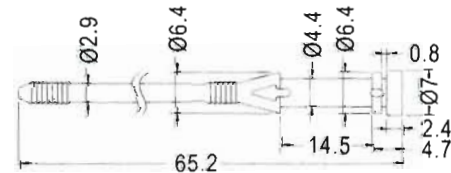
FANS MOUNTING HOLE $\varnothing 3.4$
CHASSIS MOUNTING HOLE $\varnothing 3.5$

PART NO	A	B	C	D	PACKAGE
BUB-73	73.0	0.8	5.2	3.5	500



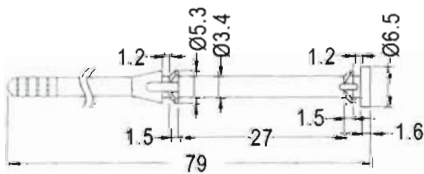
FANS MOUNTING HOLE $\varnothing 4.2$
CHASSIS MOUNTING HOLE $\varnothing 4.2$

PART NO	A	B	C	D	E	F	PACKAGE
BUB-69	68.8	19.0	3.8	1.5	0.8	4.2	500
BUB-71	71.0	19.5	5.5	2.4	1.6	4.0	



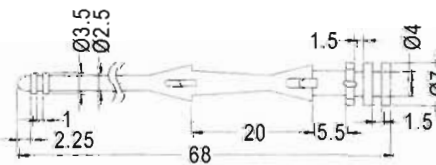
FANS MOUNTING HOLE $\varnothing 4.3$
CHASSIS MOUNTING HOLE $\varnothing 4.3$

PART NO	PACKAGE
BUB-65	500



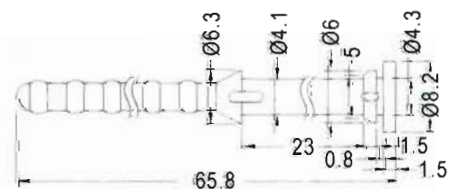
FANS MOUNTING HOLE $\varnothing 3.6$
CHASSIS MOUNTING HOLE $\varnothing 3.6$

PART NO	PACKAGE
BUB-79	500



FANS MOUNTING HOLE $\varnothing 4.0$
CHASSIS MOUNTING HOLE $\varnothing 4.0$

PART NO	PACKAGE
BUB-68	500



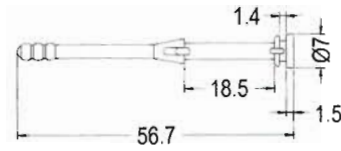
FANS MOUNTING HOLE $\varnothing 4.3$
CHASSIS MOUNTING HOLE $\varnothing 4.4$

PART NO	PACKAGE
BUB-66	1000

LÜFTER – SPREIZNIET



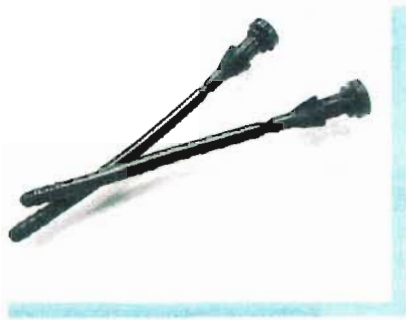
- ◆ MATERIAL:TPE
- ◆ COLOR:BLACK
- ◆ UNIT:mm



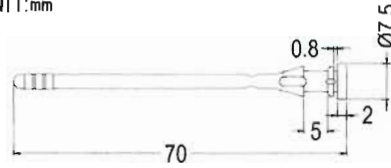
FAN MOUNTING Ø3.5 THICKNESS 20
CHASSIS MOUNTING Ø4.2 THICKNESS 1.5

PART NO	PACKAGE
BUB-56	500

LÜFTER – SPREIZNIET



- ◆ MATERIAL:TPE
- ◆ COLOR:BLACK
- ◆ UNIT:mm



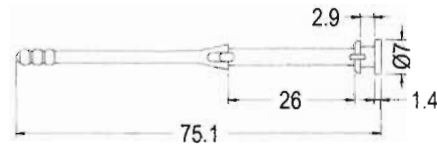
FAN MOUNTING Ø4.4 THICKNESS 5.0
CHASSIS MOUNTING Ø4.4 THICKNESS 0.8

PART NO	PACKAGE
BUB-85	500

LÜFTER – SPREIZNIET



- ◆ MATERIAL:TPE
- ◆ COLOR:BLACK
- ◆ UNIT:mm



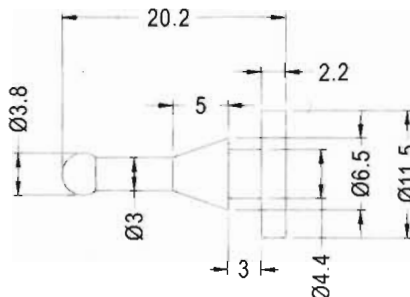
FAN MOUNTING Ø3.4 THICKNESS 26
CHASSIS MOUNTING Ø4.2 THICKNESS 2.9

PART NO	PACKAGE
BUB-76	500

LÜFTER – SPREIZNIET



- ◆ MATERIAL:TPE
- ◆ COLOR:BLACK
- ◆ UNIT:mm

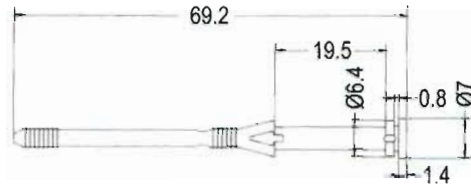


PART NO	PACKAGE
BUB-90	1000

FAX - SPREIZNIET



- ◆ MATERIAL:TPE
- ◆ COLOR:BLACK
- ◆ UNIT:mm



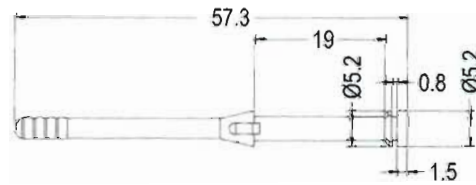
FAN MOUNTING HOLE Ø4.0
CHASSIS MOUNTING HOLE Ø4.2

PART NO	PACKAGE
BUB-83	1000

LÜFTER – SPREIZNIET



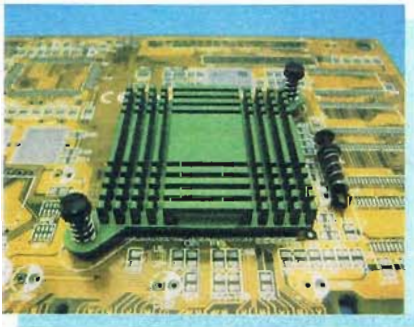
- ◆ MATERIAL:TPE
- ◆ COLOR:BLACK
- ◆ UNIT:mm



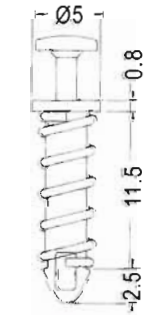
FAN MOUNTING HOLE Ø3.5
CHASSIS MOUNTING HOLE Ø3.5

PART NO	PACKAGE
BUB-57	1000

LÜFTER – SPREIZNIET



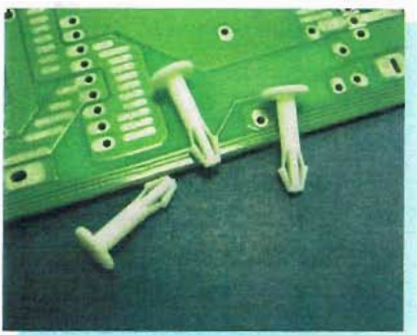
- ◆ MATERIAL:NYLON 66 (UL)
- ◆ FLAME CLASS:94V-2
- ◆ COLOR:BLACK
- ◆ UNIT:mm



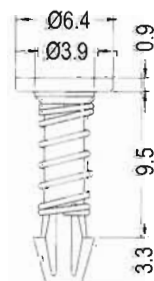
CHASSIS Ø3.0

PART NO	PACKAGE
SRMK-11.5	1000

LÜFTER – SPREIZNIET



- ◆ MATERIAL:NYLON 66 (UL)
- ◆ FLAME CLASS:94V-0/94V-2
- ◆ COLOR:BLACK
- ◆ UNIT:mm

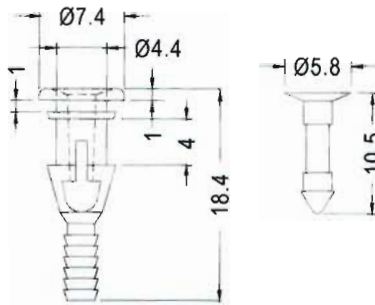


P.C.B Ø3.0

PART NO	PACKAGE
HSR-29	1000

LÜFTER – SPREIZNIET

- ◆ PIN MATERIAL: NYLON 66 (UL) 94V-2
- ◆ BODY MATERIAL: TPE
- ◆ COLOR: BLACK
- ◆ UNIT: mm

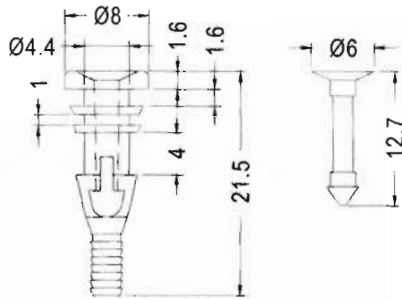


CHASSIS HOLE Ø4.8~Ø5.0

PART NO	PACKAGE
FSP-1	1000

LÜFTER – SPREIZNIET

- ◆ PIN MATERIAL: NYLON 66 (UL) 94V-2
- ◆ BODY MATERIAL: TPE
- ◆ COLOR: BLACK
- ◆ UNIT: mm

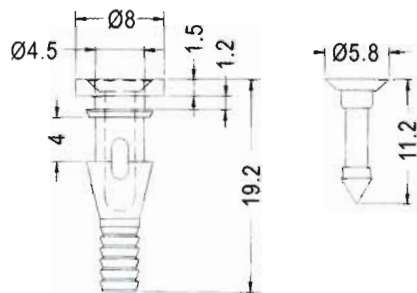


CHASSIS HOLE Ø4.8~Ø5.0

PART NO	PACKAGE
FSP-2	1000

LÜFTER – SPREIZNIET

- ◆ PIN MATERIAL: NYLON 66 (UL) 94V-2
- ◆ BODY MATERIAL: TPE
- ◆ COLOR: BLACK
- ◆ UNIT: mm

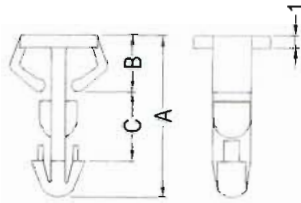
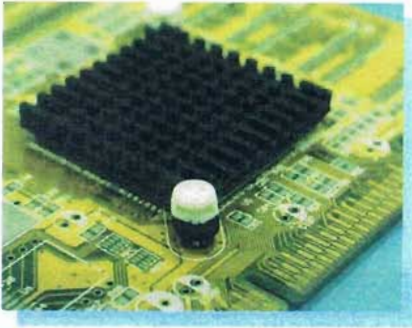


MOUNTING HOLE Ø4.5

PART NO	PACKAGE
FSP-3	1000

LÜFTER – SPREIZNIET

- ◆ MATERIAL: NYLON 66(UL)
- ◆ FLAME CLASS: 94V-2
- ◆ COLOR: NATURAL/BLACK
- ◆ UNIT: mm

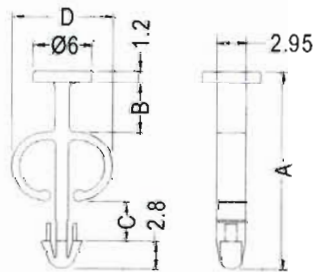
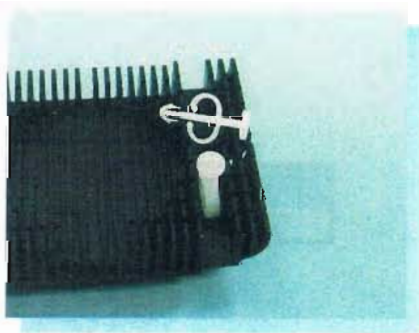


CHASSIS Ø3.0

PART NO	A	B	C	PACKAGE
MCC-1	12.5	4.4	5.3	2000
MCC-2	12.7	5.3	4.7	
MCC-3	10.3	5.0	2.5	

LÜFTER – SPREIZNIET

- ◆ MATERIAL: NYLON 66(UL)
- ◆ FLAME CLASS: 94V-2
- ◆ COLOR: NATURAL
- ◆ UNIT: mm

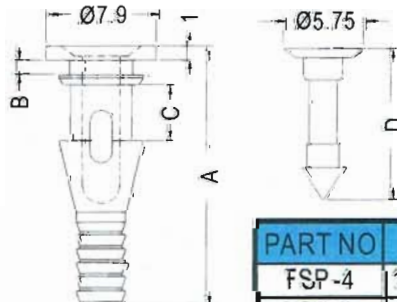


CHASSIS Ø3.0

PART NO	A	B	C	D	PACKAGE
MEE-1	20.3	5.1	4.0	10.1	1000
MEE-2	17.0	2.5	3.4	10.3	

LÜFTER – SPREIZNIET

- ◆ PIN MATERIAL: NYLON 66 (UL) 94V-2
- ◆ BODY MATERIAL: TPE
- ◆ COLOR: BLACK
- ◆ UNIT: mm



PART NO	A	B	C	D	CHASSIS	PACKAGE
FSP-4	18.55	1.05	3.9	10.8	Ø4.5~Ø4.7	1000
FSP-5	14.3	0.9	3.9	10.8	Ø4.5~Ø4.7	
FSP-6	20.1	1.6	5.0	12.1	Ø4.5	